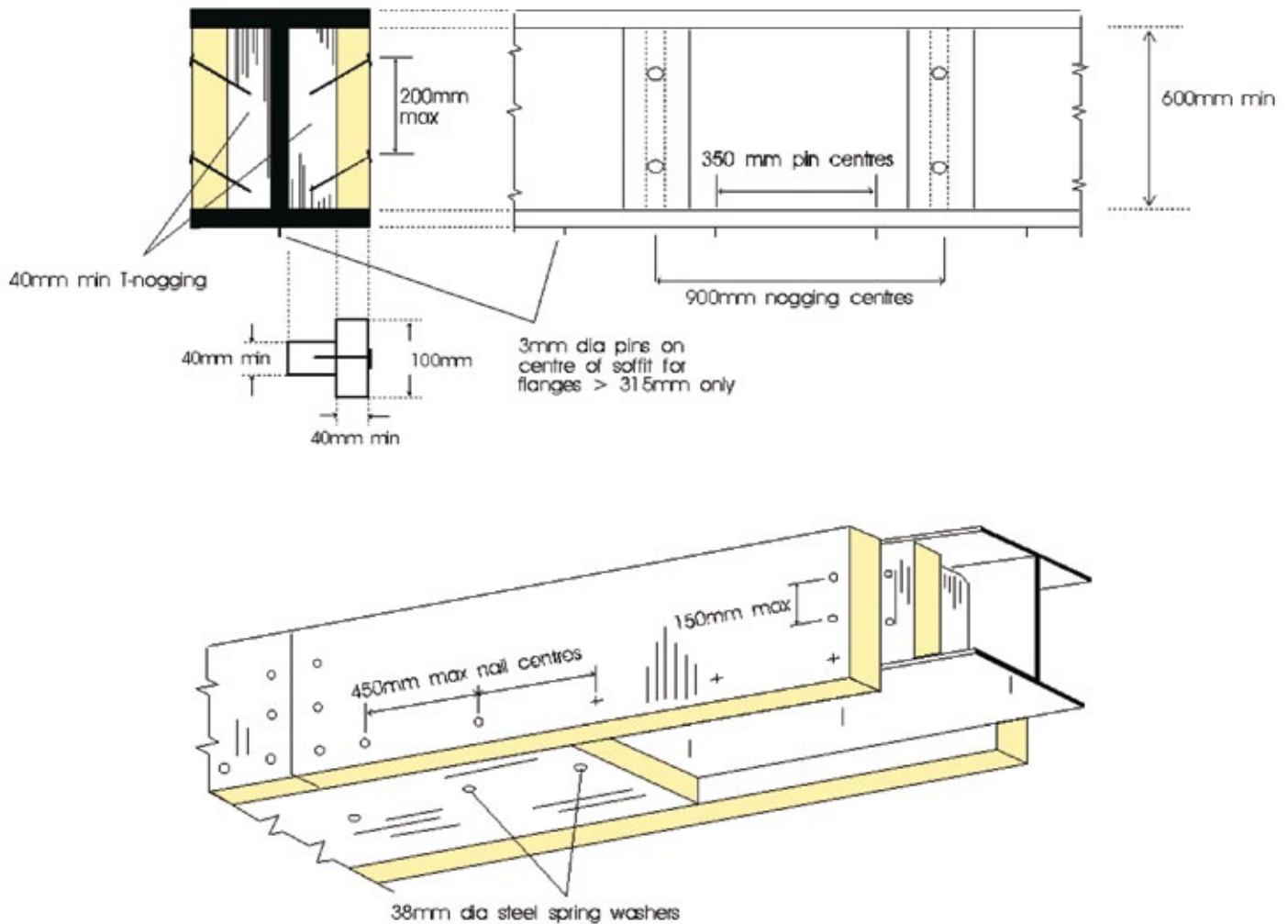
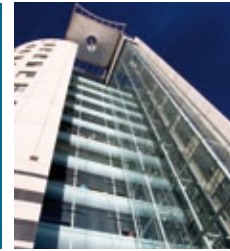


# Spiralite

Glue-fix to deep web & wide flange beams



## NOTES

1. All noggings to be 100mm wide on face, with a nominal thickness as protection (with a minimum of 40mm).
2. Maximum web depth is 914mm (universal section) 1400mm (castellated or plate girder) (section in excess of this should be profiled, see fixing detail ref 401 for details).
3. i. For flanges in excess of 315mm, one row of pins, centrally positioned at 350mm max centres, are required.  
 ii. For flanges in excess of 600mm but < 900mm, two rows of pins are required.  
 iii. For flanges in excess of 900mm but < 1200mm, three rows of pins are required.
4. Nail length = 2x protection thickness.
5. Nogging to be placed on both ends.

The information contained in Cryotherm data sheets is believed correct at the time of publication. Whilst we will endeavour to keep our publications up to date, readers will appreciate that between publications there may be pertinent changes in the law, or other developments affecting the accuracy of the information provided.

Date of this revision: 24/06/15