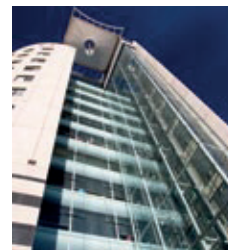


# Spiralite

## Material safety data sheet



### 1. IDENTIFICATION

Stone mineral wool board for Fire Protection, Thermal and Acoustic Insulation.

### 2. COMPOSITION

Stone mineral wool board (200 Kg/m<sup>3</sup> +/-15%) containing a thermosetting phenolic resin which has been urea extended. Up to 0.5% of mineral oil.

### 3. HAZARD IDENTIFICATION

May cause temporary skin irritation. High dust levels may irritate the throat or eyes.

### 4. FIRST AID MEASURES

Eyes: If irritation occurs wash eyes with water. If symptoms persist seek medical advice.

Skin: If irritation occurs, wash skin with soap and water.

Inhalation: High exposure may cause coughing and mild respiratory tract irritation. If irritation persists seek medical advice. Remove to fresh air.

### 5. FIRE FIGHTING MEASURE

This product does not pose a fire hazard. However, some packaging materials or facings may burn.

- a) Suitable Extinguishing Media - water, foam, carbon dioxide or dry powder.
- b) Products of combustion - carbon dioxide, carbon monoxide and some trace gases

### 6. ACCIDENTAL RELEASE MEASURES

No special measures required.

### 7. HANDLING AND STORAGE

Avoid unnecessary handling. Store in original packaging in a dry place.

Usable life - indefinite.

### 8. EXPOSURE CONTROLS - PERSONAL PROTECTION

Respiratory protection: In confined spaces it is recommended that disposable face masks complying with EN149 FFP1 or FFP2 be used.

Hand protection: Gloves may be worn for comfort.

Eye protection: When machine cutting or working above head height, eye protection is advised.

Skin protection: Loose clothing/normal protective overalls.

### 9. PHYSICAL & CHEMICAL PROPERTIES

Appearance - Stone mineral wool board supplied as slabs with a glass wool scrim facing or alternal aluminium foil (Class O) one side only.

Melting point - Above 1000°C.

Solubility - Insoluble in water and generally chemically inert.

### 10. STABILITY AND REACTIVITY

No special physical conditions need to be avoided.

No restrictions regarding incompatible materials.

### 11 TOXICOLOGY INFORMATION

Human epidemiological studies show no link between exposure to mineral wool fibres and lung disease and anyother chronic effects. Recommended not to be classified as a carcinogen under the EU Dangerous Substances Directive by the Department of Health Committee on Carcinogenicity (COC) Annual Report 1994.

### 12. ECOLOGICAL INFORMATION

Stable product with no known adverse environmental effects.

### 13. DISPOSAL CONSIDERATIONS

No special precautions.

### 14. TRANSPORT INFORMATION

No special precautions.

### 15. REGULATORY INFORMATION

No special labelling required. Mineral wool products are not classified under CHIP as hazardous, but are listed in the Control of Substances Hazardous to Health Regulations (COSHH). The MEL for man-made mineral fibre is 5mg/m<sup>3</sup> and is subject to a maximum exposure limit of 2 fibres ml-l, 8 hour TWA.

### 16. OTHER INFORMATION

Eurisol Health Statements.

HSE Guidance Notes EH40, 42, 44, 46, 65/30.

Good Practice in the Selection of Construction Materials.

COC Annual Report on Carcinogens: 1994.

This Data Sheet is in accordance with the EU Directive 91/155/EEC and does not constitute an assessment of workplace risk. The information reflects typical values and is not a product specification. No warranty is expressed or implied.

The information contained in Cryotherm data sheets is believed correct at the time of publication. Whilst we will endeavour to keep our publications up to date, readers will appreciate that between publications there may be pertinent changes in the law, or other developments affecting the accuracy of the information provided.

Date of this revision: 24/06/15