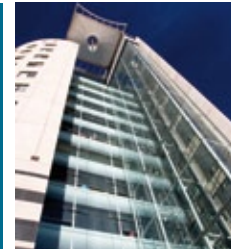


## Spiralite

### Operation & maintenance



#### BACKGROUND

Spiralite is a fire protection board normally clad around steel beams and columns to achieve the required fire rating for a building. It will appear yellow/green with a glassfibre tissue face. It will feel fibrous. It may be foil faced; either silver, white or black.

Spiralite boards range in thickness from 20mm to 100mm in 5mm increments. Certain thicknesses may be made up of laminates of other thicknesses. The boards are secured in place by spiral screws for fire ratings up to 2 hours and by glue & pins from 2 to 4 hours. 20mm boards are the most regularly used for 1 hour ratings.

Reference should be made to TDS 180 Material Safety Data Sheet. This document provides relevant COSHH information for handling etc.

Spiralite has been installed to delay the effects of fire on the structure of the building in compliance with Building Regulations and fire ratings. Any damage to or removal of the installed system will affect the fire integrity of the building and may put life and property at unnecessary risk.

There are no running maintenance requirements.

The installation must not be disturbed, altered or removed. It must not be allowed to become deluged or over sprayed/clad with other materials. Contractors working near or around the installation should be briefed not to remove or alter it.

We recommend regular inspections take place to ensure there has been no alteration or deterioration. Any damage must be repaired immediately by an approved contractor.

The information contained in Cryotherm data sheets is believed correct at the time of publication. Whilst we will endeavour to keep our publications up to date, readers will appreciate that between publications there may be pertinent changes in the law, or other developments affecting the accuracy of the information provided.

Date of this revision: 24/06/15