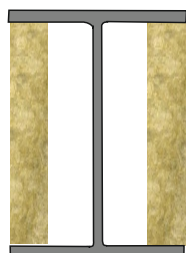
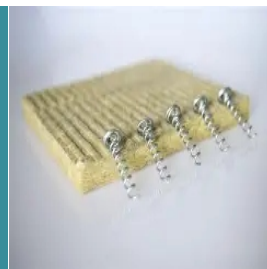
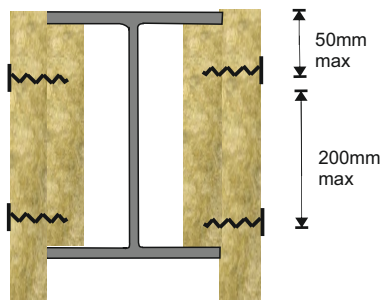


Spiralite

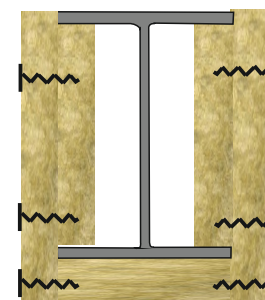
General fixing detail to beams



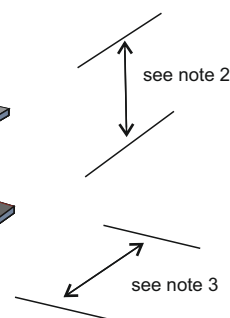
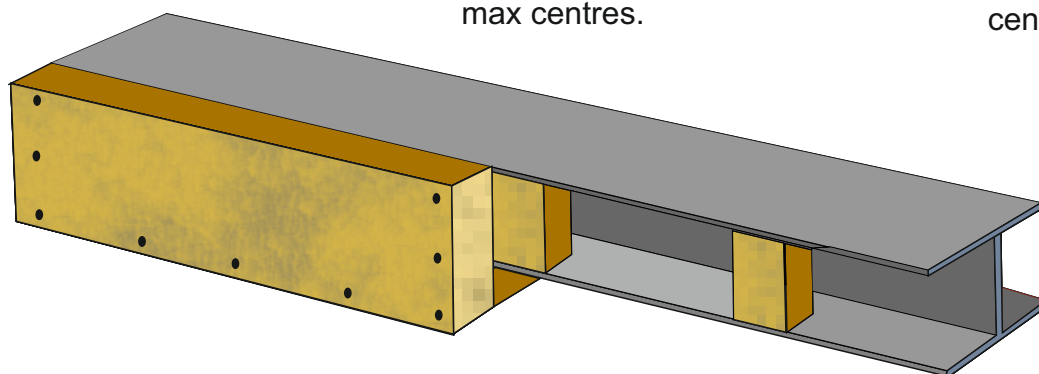
1. Push fit 100mm wide noggins between flanges, flush with flange tips, at 600mm max centres



2. Cut side panels equal to depth of section plus nominal thickness of protection. Secure to noggins using Spiralite Screws at 200mm max centres.



3. Cut soft panel equal to width of lower flange, secure soffit panel to side panels using Spiralite Screws at 150mm centres.



NOTES

1. All joints are square butt joints, no adhesive or filler is required.
2. All noggins are 100mm wide with a nominal thickness as protection thickness with the following constraints i.e minimum noggin thickness 30mm up to web depth 417mm
3. Maximum flange width 315mm.
4. Optimum screw length is protection thickness + noggin thickness minus 5mm. Longer screws may be used.
5. Noggins to be placed on both ends of beam.

The information contained in Cryotherm data sheet is believed correct at the time of publication. Whilst we will endeavour to the keep our publications up to date., readers will appreciate that between publication there may be pertinent in the law, or other development affecting the accuracy of the information provided.

Date of this revision:01/01/2026

Cryotherm Insulation Ltd, Hirst Wood Road, Shipley, West Yorkshire, BD18 4BU

Tel: 01274 589175 / Email: enquiries@cryotherm.co.uk / www.cryotherm.co.uk