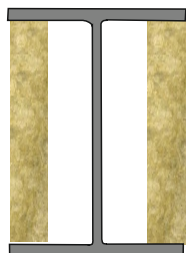
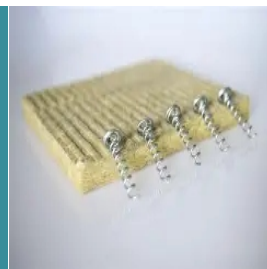
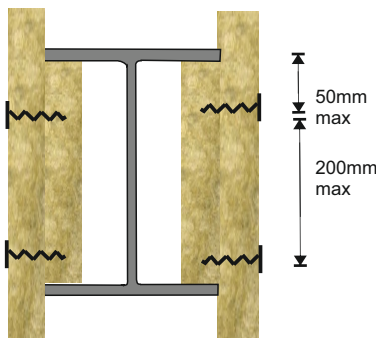


Spiralite

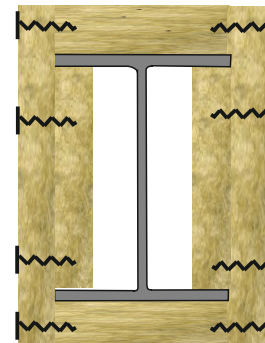
General fixing detail to columns



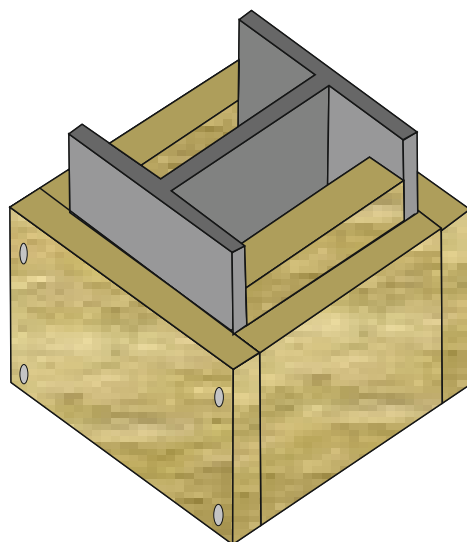
1. Push fit 100mm wide noggins between flanges, flush with flange tips, at 600mm max centres



2. Cut sided panels equal to depth of section plus nominal thickness of protection. Secure to noggings using Spiralite screws at 200mm max centres.



3. Cut soffit panel equal to width of lower flange x2. secure soffit panel to side panels using Spiralite screws at 150 mm



NOTES

1. Noggin thickness to be same as protection thickness with a minimum of 30mm.
2. Optimum screw length = 2 x Protection thickness minus 5mm, longer screws may be used.
3. No adhesive or filler required.
4. Noggins to be placed at top & bottom of Column.

The information contained in Cryotherm data sheet is believed correct at the time of publication. Whilst we will endeavour to keep our publications up to date., readers will appreciate that between publication there may be pertinent in the law, or other development affecting the accuracy of the information provided.

Date of this revision:01/01/2026

Cryotherm Insulation Ltd, Hirst Wood Road, Shipley, West Yorkshire, BD18 4BU

Tel: 01274 589175 / Email: enquiries@cryotherm.co.uk / www.cryotherm.co.uk